

HP8868

-UN-27JUL99



JOHN DEERE 9450 SELF-PROPELLED COMBINE™ WITH 90 SERIES CORN HEAD

MANUFACTURED (1999-)

(SPECIFICATIONS AND DESIGN SUBJECT TO CHANGE WITHOUT NOTICE)

COPYRIGHT (C) 2000. DEERE & COMPANY. MOLINE, ILLINOIS, USA. ALL RIGHTS RESERVED.

NOTE

FOR 900 SERIES PLATFORM PARTS INFORMATION, REFER TO JOHN DEERE PARTS CATALOG - PC2104.

FOR 40 SERIES CORN HEAD PARTS INFORMATION, REFER TO JOHN DEERE PARTS CATALOG - PC1223.

FOR 50A SERIES ROW-CROP HEAD PARTS INFORMATION, REFER TO JOHN DEERE PARTS CATALOG - PC1747.

FOR THREE-ROLLER BELT PICKUP PARTS INFORMATION, REFER TO JOHN DEERE PARTS CATALOG - PC2210.

FOR 918 AND 920 DRAPER PARTS INFORMATION, REFER TO JOHN DEERE PARTS CATALOG - PC2212.

FOR 90 SERIES CORN HEAD PARTS INFORMATION, REFER TO JOHN DEERE PARTS CATALOG - PC2404.

FOR 900R & F SERIES PLATFORMS PARTS INFORMATION, REFER TO JOHN DEERE PARTS CATALOG - PC2771.

FOR 914P BELT PICKUP PARTS INFORMATION, REFER TO JOHN DEERE PARTS CATALOG - PC2772.

IMPORTANT

THIS PARTS CATALOG CONTAINS PARTS INFORMATION FOR THE 9450 SELF-PROPELLED COMBINE. VINTAGE IS DETERMINED BY THE COMBINE SERIAL NUMBER OR THE PRODUCT IDENTIFICATION NUMBER (PIN). IT IS IMPORTANT THAT THE CORRECT NUMBERS BE USED WHEN ORDERING PARTS.

PRODUCT INFORMATION NUMBER (PIN) PLATE

THE PRODUCT IDENTIFICATION NUMBER (PIN) PLATE IS LOCATED NEAR THE RIGHT-HAND SIDE OF THE TOOL BOX.
AN EXAMPLE OF THE TWO-LINES ON THIS PIN PLATE IS:

HO9450X685000
COMBINE

(FIRST LINE)

HO - MANUFACTURING UNIT (HARVESTER WORKS)

9450 - MODEL IDENTIFIER

X - CONFIGURATION CODE/MODEL IDENTIFIER SUFFIX

900000 - SEQUENTIAL NUMBER USED IN SERIAL NO. COLUMN

(SECOND LINE)

COMBINE - TYPE OF PRODUCT

PARTS LISTING INFORMATION

SERIAL NUMBER OR PRODUCT IDENTIFICATION NUMBER (PIN) INFORMATION SHOWS ON WHICH MACHINES THE PART MAY BE USED; FOR EXAMPLE:

- THE PART CAN BE USED ON ALL MACHINES.
- 000000 THE PART CAN BE USED ON ALL MACHINES UP TO AND INCLUDING THE SERIAL NUMBER LISTED.
- 000000- THE PART CAN BE USED ON ALL MACHINES BEGINNING WITH THE SERIAL NUMBER LISTED.
- 000000-000000 THE PART CAN BE USED ON ALL MACHINES BETWEEN AND INCLUDING SERIAL NUMBERS LISTED.

WHEN XXXXXX'S ARE LISTED IN PLACE OF A SERIAL NUMBER, A SERIAL NUMBER CHANGE WAS MADE, BUT THE EXACT SERIAL NUMBER WAS NOT AVAILABLE WHEN THE CATALOG WAS PRINTED.

RGP3513 -UN-01JAN94



RGP3513

**Thanks very much for your reading,
Want to get more information,
Please click here, Then get the complete
manual**

JustClickHere 

NOTE:

**If there is no response to click on the link above,
please download the PDF document first, and then
click on it.**

**Have any questions please write to me:
admin@servicemanualperfect.com**

ENGINE SERIAL NUMBER PLATE

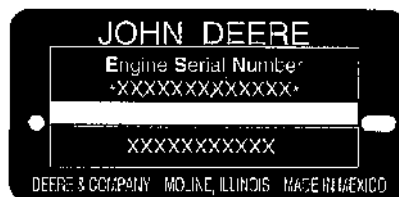
TP58281 -UN-26JAN98



DUBUQUE OPTION



SARAN OPTION



TORREON OPTION

TP58281

- | | |
|--|-----------------------------------|
| 1. DESIGNATES ENGINE MANUFACTURER | T-JOHN DEERE DUBUQUE WORKS |
| 2. DESIGNATES NUMBER OF CYLINDERS AND LITERS | 6068 (6.8 LITER) |
| 3. DESIGNATES FUEL TYPE OR SPECIAL CONDITION | DF NON-TURBOCHARGED DIESEL ENGINE |
| 4. DESIGNATES ENGINE SERIAL NUMBER | TF TURBOCHARGED DIESEL ENGINE |
| 5. DESIGNATES THE ENGINE APPLICATION | 123456 |
| | 6068HH052 |

(SPECIFICATIONS AND DESIGN SUBJECT TO CHANGE WITHOUT NOTICE)

DIRECTION ARROW

ARROWS ARE USED WITH ILLUSTRATIONS TO INDICATE THE FRONT OF THE UNIT. "RIGHT-HAND" AND "LEFT-HAND" SIDES ARE DETERMINED BY FACING IN THE DIRECTION OF MACHINE FORWARD TRAVEL.

BOX-ENCLOSED ILLUSTRATIONS

A KEY NUMBER, SHOWN IN THE PARTS LIST, IS ASSIGNED TO A BOX ENCLOSING ALL PARTS SOLD AS A SERVICE ASSEMBLY. A BOX NOT KEYED INCLUDES NON-CURRENT PARTS.

KITS

KIT INFORMATION WILL BE FOUND IMMEDIATELY FOLLOWING THE STORY IN WHICH IT IS USED. THE ILLUSTRATION IS REPEATED WITH ONLY THE KIT PARTS CALLED OUT AND WITH ALL OTHER PARTS SHOWN IN PHANTOM.

JDM REMANUFACTURED COMPONENTS

THE SERVICE PARTS LISTED IN THIS CATALOG ARE INTENDED FOR THE REPAIR OF ORIGINAL EQUIPMENT COMPONENTS. ALTHOUGH MOST SERVICE PARTS MAY BE USED TO REPAIR REMANUFACTURED COMPONENTS, THE REMANUFACTURED DESIGN MAY CHANGE PARTS SUFFICIENTLY SO THAT SERVICE PARTS ARE INADEQUATE OR NOT USABLE.

BOLT AND CAP SCREW STRENGTH IDENTIFICATION

BOLTS AND CAP SCREWS REQUIRED TO HAVE HIGH-STRENGTH QUALITIES EQUIVALENT TO SAE GRADE 8 ARE IDENTIFIED THROUGHOUT THIS CATALOG BY THE DESCRIPTION HS SAE 8. ALL STANDARD BOLTS AND CAP SCREWS ARE SAE GRADE 5 OR LOWER. BOLTS AND CAP SCREWS REQUIRED TO HAVE HIGH-STRENGTH QUALITIES EQUIVALENT TO PROPERTY CLASS 10.9 ARE IDENTIFIED THROUGHOUT THIS CATALOG BY THE DESCRIPTION 10.9. ALL STANDARD BOLTS AND CAP SCREWS ARE PROPERTY CLASS 8.8 OR LOWER.

SI UNITS OF MEASURE

METRIC DIMENSIONS ARE GIVEN, WHERE APPLICABLE, THROUGHOUT THIS PARTS CATALOG.

TRADEMARKS

THROUGHOUT THIS PARTS CATALOG, YOU WILL FIND THE FOLLOWING DEERE & COMPANY TRADEMARKS:

DIAL-A-SPEED™
DIAL-A-MATIC™
HARVESTRAK™
CONTOUR MASTER™

POSI-TORQ™
TORQ-GARD SUPREME®
QUIK-TATCH™

CHANGE INDICATOR LINE

CHANGES AFFECTING THE ORDERING OF PARTS ARE IDENTIFIED BY VERTICAL LINES MARKED IN THE LEFT-HAND MARGIN OF REVISED PARTS LISTING IMAGES. A LINE IS ALSO AT THE LEFT-HAND EDGE OF THE SAME PART NUMBER IN THE NUMERICAL INDEX TO SHOW THE LOCATION OF REVISED INFORMATION.

FUNCTION CODE

(EXAMPLE - FC: 5000)

FUNCTION CODES ARE LOCATED ON EACH PAGE IN THE UPPER RIGHT-HAND CORNER IN THE BOX. THE CODE LISTED IS A GROUPING CODE THAT CAN BE USED FOR WARRANTIES AND FOR DTAC TO IDENTIFY CERTAIN AREAS.

COMPLETE GOODS LISTINGS

COMPLETE GOODS ARE IN BOLD FACE TYPE. ORDER SEPARATELY. DO NOT INCLUDE ON REPLACEMENT PARTS ORDER.

MEMORANDA

SECTION INDEX

SECTION 10 - GENERAL INFORMATION

SECTION 20 - ENGINE ACCESSORIES

SECTION 25 - ENGINE

SECTION 30 - FUEL AND AIR

SECTION 40 - ELECTRICAL

SECTION 50 - POWER TRAIN

SECTION 60 - STEERING AND BRAKES

SECTION 70 - HYDRAULICS

SECTION 80 - BODY AND SHIELDS

SECTION 90 - OPERATOR'S STATION

SECTION 95 - AIR CONDITIONING AND HEATING

SECTION 100 - FEEDER HOUSE

SECTION 110 - THRESHING AND SEPARATION

SECTION 120 - CLEANING SHOE

SECTION 125 - ELEVATORS

SECTION 130 - RESIDUE DISPOSAL

SECTION 140 - DRIVES

SECTION 150 - GRAIN TANK AND UNLOADING AUGER

SECTION 155 - GREENSTAR YIELD MAPPING AND MONITOR SYSTEMS

SECTION 170 - DECALS

SECTION 180 - NUMERICAL INDEX

ALPHABETICAL INDEX

GRID		PAGE	GRID		PAGE
	A				
2J11	A/C COMPRESSOR MANIFOLD.....	95 - 11	4B21	AUGER HUB SUPPORT	150 - 20
2J11	A/C COMPRESSOR R134A	95 - 11	4B13	AUGER SWING CYLINDER, HOSES AND LINES	150 - 12
1C22	ACCESS COVER, INJECTION PUMP GEAR	25 - 16	4B19	AUGER SWIVEL SUPPORT AND BRACES	150 - 18
1B9	ACCESS DOOR, RADIATOR	20 - 8	3F19	AUGER TROUGH, LOWER TAILINGS.....	125 - 18
2I13	ACCESSORIES, OVERHEAD CONSOLE	90 - 38	4B11	AUGER, GRAIN TANK, VERTICAL UNLOADING	150 - 10
2I5	ACCESSORIES, STEERING COLUMN	90 - 30	4C3	AUGER, HORIZONTAL UNLOADING.....	150 - 26
2D22	ACCUMULATOR PRESSURE GAUGE.....	70 - 36	4B17	AUGER, HORIZONTAL UNLOADING, SWIVEL.....	150 - 16
2D18	ACCUMULATOR, MOUNTING BRACKET, ONE HALF GALLON.....	70 - 32	3F11	AUGER, LOADING, CLEAN GRAIN	125 - 10
2D20	ACCUMULATOR, MOUNTING, BRACKET ONE GALLON	70 - 34	3F5	AUGER, LOWER CLEAN GRAIN	125 - 4
2D20	ACCUMULATOR, ONE GALLON	70 - 34	3G1	AUGER, LOWER TAILINGS	125 - 24
2D18	ACCUMULATOR, ONE HALF GALLON	70 - 32	3G3	AUGER, LOWER TAILINGS DRIVE TIGHTENER	125 - 26
1I6	ADJUSTABLE REAR AXLE.....	50 - 3	3J7	AUGER, UPPER TAILINGS.....	140 - 54
2C8	ADJUSTABLE REAR AXLE STEERING TIE RODS	60 - 32	4C7	AUGERS, GRAIN TANK CROSS	150 - 30
1H5	ADJUSTING MOTOR, CONCAVE.....	40 - 67	3E3	AUGERS, SHOE GRAIN SUPPLY AND HOUSING.....	120 - 2
1H10	ADJUSTING MOTOR, SEPARATOR FAN DRIVE	40 - 72	1I7	AXLE SPACERS	50 - 4
1C5	AFTERCOOLER AND INTAKE MANIFOLD SENSOR....	20 - 30	1I8	AXLE SPACERS	50 - 5
1E15	AIR CLEANER AND INTAKE TUBES.....	30 - 16	1I4	AXLE SUPPORT, REAR	50 - 1
2J14	AIR CONDITIONER COMPRESSOR HARDWARE	95 - 14	1I24	AXLE, FINAL DRIVE, SINGLE REDUCTION	50 - 23
2J12	AIR CONDITIONER COMPRESSOR HOSE	95 - 12	1I6	AXLE, REAR, ADJUSTABLE.....	50 - 3
2J7	AIR CONDITIONING AND HEATER DUCTS	95 - 7	2C6	AXLE, REAR, SPINDLES (HEAVY DUTY).....	60 - 30
2J4	AIR CONDITIONING AND HEATER HOUSING, LOWER	95 - 4	2C4	AXLE, REAR, SPINDLES (REGULAR DUTY)	60 - 28
1B20	AIR CONDITIONING COMPRESSOR BRACKET	20 - 20		B	
2C20	AIR CONDITIONING CONDENSER AND OIL COOLER	70 - 8	1H1	BACKSHAFT SPEED SENSOR, FEEDER HOUSE	40 - 62
2J8	AIR CONDITIONING SYSTEM & WATER VALVE.....	95 - 8	2I9	BALL JOINT, GEARSHIFT	90 - 34
2J10	AIR CONDITIONING SYSTEM - EVAPORATOR.....	95 - 10	4B5	BASE, GRAIN TANK	150 - 4
2J9	AIR CONDITIONING SYSTEM - RECEIVER-DRYER	95 - 9	1H13	BATTERIES AND CABLES	40 - 76
1G3	AIR CONDITIONING WIRING HARNESS	40 - 36	3D21	BEARING KIT, STRAW WALKERS	110 - 26
2J5	AIR CONDITIONING, HEATER HOUSING, LOWER	95 - 5	1C18	BEARING, CRANKSHAFT THRUST	25 - 12
2J2	AIR CONDITIONING, HEATER HOUSING, UPPER	95 - 2	3B5	BEARING, REVERSER GEAR BOX.....	100 - 4
1C1	AIR COOLER	20 - 26	1J13	BEARINGS, CAM LOBE MOTOR	50 - 38
2J4	AIR DUCT, HEATER AND AIR CONDITIONER.....	95 - 4	1C17	BEARINGS, CONNECTING ROD	25 - 11
2J2	AIR DUCT, INTAKE, HEATER AND AIR CONDITIONER.....	95 - 2	1I23	BEARINGS, FINAL DRIVE	50 - 22
1B7	AIR DUCT, RADIATOR SHELL.....	20 - 6	1B3	BEARINGS, IDLER ARM, ROTARY SCREEN	20 - 2
1B5	AIR DUCT, ROTARY SCREEN.....	20 - 4	1C18	BEARINGS, MAIN	25 - 12
1D18	AIR INTAKE MANIFOLD	25 - 38	3F24	BEARINGS, TAILINGS ELEVATOR CONVEYOR	125 - 23
2H18	AIR SEAT SUSPENSION	90 - 18	1I16	BEARINGS, TRANSMISSION	50 - 14
2H20	AIR SEAT SWITCH, OPERATOR'S	90 - 20	1I18	BEARINGS, TRANSMISSION PINION SHAFT.....	50 - 16
2H18	AIR SUSPENSION, SEAT.....	90 - 18	3I18	BEATER DRIVE SHEAVES AND TIGHTENER	140 - 40
1G23	ALTERNATOR MOUNTING BRACKET	40 - 59	3D16	BEATER GRATE CURTAIN	110 - 21
1G21	ALTERNATOR, SHEAVE AND BELT, (185 AMP)	40 - 56	3D17	BEATER, SHAFT AND DRIVE BELT	110 - 22
1G19	ALTERNATOR, SHEAVE AND BELT, (95 AMP)	40 - 54	4C14	BELT GUIDE, UNLOADING AUGER DRIVE	150 - 38
2I15	ANTENNA, SPEAKERS AND RADIO	90 - 40	2E3	BELT PICKUP / REEL DRIVE, AND SHEAVE.....	70 - 42
3I3	ARM, DUAL RANGE LOCKOUT.....	140 - 25	4E7	BELT ROUTINGS REFERENCE, R.H.	170 - 26
1B3	ARM, IDLER.....	20 - 2	1G21	BELT, ALTERNATOR (185 AMP)	40 - 56
1B3	ARM, PITMAN, ROTARY SCREEN DRIVE	20 - 2	1G19	BELT, ALTERNATOR (95AMP).....	40 - 54
1D3	ARM, ROCKER	25 - 22	3I18	BELT, BEATER DRIVE AND TIGHTENER.....	140 - 40
2H23	ARMREST PANEL, OPERATOR'S	90 - 24	3D17	BELT, BEATER SHAFT	110 - 22
2I1	ARMREST PANEL, OPERATOR'S	90 - 26	3J1	BELT, CHOPPER DRIVES (FRONT)	140 - 48
1F23	ARMREST WIRING HARNESS.....	40 - 32	3J10	BELT, CLEAN GRAIN ELEVATOR DRIVE TIGHTENER.....	140 - 58
2H20	ARMREST, OPERATOR'S.....	90 - 20	1B13	BELT, COOLING FAN	20 - 12
3E11	ARMS, FRAME, PRECLEANER CHAFFER	120 - 10	3C20	BELT, DRIVE SHAFT FRONT (FIXED SPEED WITH REVERSER)	100 - 44
1J20	ARMS, STEERING, CAM LOBE MOTOR.....	50 - 47	3I1	BELT, DUAL RANGE CYLINDER DRIVE.....	140 - 22
2H12	ASHTRAY.....	90 - 12	3I8	BELT, DUAL RANGE CYLINDER DRIVE, INTERMEDIATE SHEAVE.....	140 - 30
2B17	ATTENUATOR, HYDRAULIC STEERING.....	60 - 16	3H22	BELT, ELECTROMAGNETIC CLUTCH.....	140 - 17
4C12	AUGER COUNTERSHAFT DRIVE (UNLOADING).....	150 - 36	1C4	BELT, ENGINE FITTINGS.....	20 - 29
4C9	AUGER COVERS AND CHANNEL, CROSS	150 - 32	1B17	BELT, FAN IDLER PULLEY	20 - 16
4C14	AUGER DRIVE BELT GUIDE, UNLOADING	150 - 38	3C7	BELT, FEEDER CONVEYOR	100 - 30
4B23	AUGER HOUSING, HORIZONTAL UNLOADING.....	150 - 22	3B11	BELT, FEEDER HOUSE DRIVE TIGHTENER	100 - 10
3F9	AUGER HOUSING, LOADING, UPPER CLEAN GRAIN	125 - 8	3B7	BELT, FEEDER HOUSE DRIVE TIGHTENER (FIXED SPEED).....	100 - 6
			3G1	BELT, LOWER TAILINGS AUGER	125 - 24

ALPHABETICAL INDEX - CONTINUED

GRID		PAGE	GRID		PAGE
3G3	BELT, LOWER TAILINGS AUGER TIGHTENER	125 - 26	1H18	BULB, REAR TURN AND TAIL LIGHT	40 - 81
2H20	BELT, OPERATOR'S SEAT	90 - 20	1H17	BULB, REAR TURN SIGNAL (AMBER)	40 - 80
2H22	BELT, PASSENGER'S SEAT	90 - 22	1H19	BULB, SIDE FINDER	40 - 82
1B3	BELT, ROTARY SCREEN DRIVE	20 - 2	2I5	BULB, STEERING COLUMN PANEL	90 - 30
4E11	BELT, ROUTING REFERENCE, L.H.	170 - 30	1H20	BULB, TRANSPORT WARNING LIGHTS	40 - 83
4E13	BELT, ROUTING REFERENCE, L.H.	170 - 32			
4E9	BELT, ROUTING REFERENCE, R.H.	170 - 28		C	
3H23	BELT, SECONDARY COUNTERSHAFT	140 - 18			
3I12	BELT, SECONDARY COUNTERSHAFT DRIVE	140 - 34	2J6	CAB AIR FILTER AND HOUSING	95 - 6
3I20	BELT, SEPARATOR FAN DRIVE	140 - 42	2H12	CAB DOOR AND WINDOW	90 - 12
3H25	BELT, SINGLE RANGE CYLINDER DRIVE	140 - 21	2H14	CAB DOOR LATCH	90 - 14
3D23	BELT, STRAW WALKER AND SPREADER	110 - 28	2H8	CAB INTERIOR TRIM PANELS	90 - 8
3I16	BELT, STRAW WALKER, CONVEYOR AUGERS, SIEVE AND CHAFFER DRIVE	140 - 38	2I20	CAB LANDING AND MIRROR (L.H.)	90 - 46
4C12	BELT, UNLOADING AUGER COUNTERSHAFT	150 - 36	2I22	CAB LANDING AND MIRROR (R.H.)	90 - 48
4C7	BELT, UNLOADING AUGERS	150 - 30	2H20	CAB OPERATOR'S SEAT AND BACKREST	90 - 20
3C18	BELT, UPPER DRIVE SHAFT (FIXED SPEED WITH REVERSER)	100 - 42	2H6	CAB REAR AND SIDE SEALS	90 - 6
3C10	BELT, UPPER, VARIABLE DRIVE COUNTERSHAFT	100 - 34	2H10	CAB ROOF	90 - 10
3B3	BELT, VARIABLE SPEED FEEDERHOUSE	100 - 2	1H14	CAB ROOF LIGHTS	40 - 77
3B9	BELT, VARIABLE SPEED TIGHTENER DRIVE	100 - 8	2H3	CAB SUPPORT	90 - 2
3J3	BELTS, STRAW CHOPPER DRIVES	140 - 50	1F21	CAB, MAIN WIRING HARNESS	40 - 30
1G7	BLADE, WIPER	40 - 40	2B13	CABLE, BRAKE	60 - 12
3G11	BLADES, TRI-ROD CHOPPER	130 - 4	4D5	CABLE, DATASTORE/COMPUTER	155 - 14
1C10	BLOCK, CYLINDER	25 - 4	1F3	CABLE, WIRING	40 - 8
1B22	BLOCK, ENGINE COOLANT HEATER	20 - 22	1H13	CABLES, BATTERY	40 - 76
1C12	BLOCK, ENGINE SHORT	25 - 6	1J1	CABLES, HYDROSTATIC DRIVE CONTROL	50 - 24
1G21	BOSCH ALTERNATOR, (185 AMP)	40 - 56	1J13	CAM LOBE MOTOR	50 - 38
1G19	BOSCH ALTERNATOR, (95 AMP)	40 - 54	1J17	CAM, CARRIER AND PISTON	50 - 43
2G22	BOX, TOOL	80 - 40	3D13	CAM, SPIKE TOOTH CONCAVE	110 - 18
2D18	BRACKET, ACCUMULATOR MOUNTING	70 - 32	1I15	CAM, TRANSMISSION SHIFTER	50 - 12
3I10	BRACKET, ADJUSTING, CYLINDER DRIVE, DUAL-RANGE	140 - 32	1C25	CAMSHAFT	25 - 19
1B20	BRACKET, AIR CONDITIONING COMPRESSOR	20 - 20	1D3	CAMSHAFT FOLLOWERS	25 - 22
1G23	BRACKET, ALTERNATOR MOUNTING	40 - 59	1C25	CAMSHAFT GEAR	25 - 19
2B12	BRACKET, BRAKE CABLE SUPPORT	60 - 11	1D12	CAP, ENGINE OIL FILL	25 - 32
4C19	BRACKET, DISPLAY, YIELD MAPPING	155 - 4	1E17	CAP, EXHAUST PIPE	30 - 18
3C4	BRACKET, FEEDER CONVEYOR	100 - 27	4B9	CAP, GRAIN TANK CLEAN OUT CHUTE	150 - 8
4C21	BRACKET, MASS FLOW SENSOR YIELD MAPPING	155 - 6	1C10	CAP, MAIN BEARING	25 - 4
4C23	BRACKET, MOISTURE SENSOR, YIELD MAPPING	155 - 8	1B11	CAP, RADIATOR	20 - 10
4C17	BRACKET, POSITION RECEIVER, YIELD MAPPING	155 - 2	1J18	CAPS, YOKE AND PIVOTS (STEERABLE MOTOR)	50 - 44
4C21	BRACKET, TRANSDUCER MOUNTING YIELD MAPPING	155 - 6	1J17	CARRIER, PISTON, AND CAM	50 - 43
1H12	BRACKETS, LOW SHAFT SPEED SENSORS	40 - 75	1K11	CASE DRAIN, HYDRAULIC LINES 4-WHEEL DRIVE	50 - 62
1B9	BRACKETS, RADITOR MOUNTING	20 - 8	1G14	CENTRAL ELECTRONICS MODULE AND CIRCUIT BOARDS	40 - 48
2C24	BRACKETS, SOLENOID CONTROL VALVE	70 - 13	2E24	CHAFF SPREADER CONTROL, CHECK VALVE	70 - 64
2B12	BRAKE CABLE SUPPORT BRACKET	60 - 11	3G24	CHAFF SPREADER DISC	130 - 18
2B7	BRAKE LINES, MASTER CYLINDER AND RESERVOIR	60 - 6	2F1	CHAFF SPREADER LINES AND FITTINGS	70 - 66
2B9	BRAKE MASTER CYLINDER	60 - 8	3H5	CHAFF SPREADER MOUNTING SUPPORT	130 - 24
2B3	BRAKE PEDAL AND SEAL, PARKING	60 - 2	3H3	CHAFF SPREADER PAN AND SEALS	130 - 22
2B5	BRAKE PEDALS AND MASTER CYLINDER	60 - 4	2E1	CHAFF SPREADER PUMP	70 - 40
2B13	BRAKE SHOES AND DRUM	60 - 12	3H1	CHAFF SPREADER SHIELDS AND HANDLES	130 - 20
2B11	BRAKE SLAVE CYLINDER	60 - 10	2F5	CHAFF SPREADER, HOSES AND, LINES	70 - 70
1B5	BRUSH, ROTARY SCREEN DOOR	20 - 4	2F3	CHAFF SPREADER, HOSES, VALVE AND PUMP	70 - 68
2H3	BULB, CAB STUBBLE LAMP	90 - 2	3E13	CHAFFER ELEMENT	120 - 12
2I11	BULB, CORNERPOST DISPLAY	90 - 36	3E15	CHAFFER EXTENSION ELEMENT	120 - 14
2H10	BULB, DOME LIGHT, CAB	90 - 10	3E17	CHAFFER FRAME	120 - 16
2G20	BULB, ENGINE ACCESS PLATFORM LAMP	80 - 38	3E11	CHAFFER FRAME ARMS, PRECLEANER	120 - 10
2G16	BULB, ENGINE SERVICE LAMP	80 - 34	3E9	CHAFFER FRAME, PRE-CLEANER	120 - 8
1H15	BULB, FRONT TURN SIGNAL (AMBER)	40 - 78	3E7	CHAFFER, PRECLEANING	120 - 6
2G5	BULB, GULLWING DOOR, R.H.	80 - 22	3J9	CHAIN TIGHTENER, UPPER TAILINGS DRIVE	140 - 57
2F21	BULB, GULLWING SERVICE DOOR, L.H.	80 - 14	2I17	CHAIN, CAB PLATFORM SAFETY	90 - 42
2G7	BULB, RADIATOR DOOR	80 - 24	3F7	CHAIN, CONVEYOR, CLEAN GRAIN LOWER ELEVATOR	125 - 6
2G1	BULB, REAR CORNER PANEL	80 - 18	3C3	CHAIN, DRUM AND FEEDER CONVEYOR IDLER SHAFT	100 - 26
			3C7	CHAIN, FEEDER CONVEYOR	100 - 30
			3C4	CHAIN, FEEDER CONVEYOR DRIVE	100 - 27

ALPHABETICAL INDEX - CONTINUED

GRID		PAGE	GRID		PAGE
4E7	CHAIN, LINK, FEEDER CONVEYOR, R.H.	170-26	2I1	CONTROL PANEL, OPERATOR'S ARMREST	90-26
3G1	CHAIN, LOWER TAILINGS AUGER	125-24	1G18	CONTROL UNIT, ELECTRONIC (ECU)	40-52
3J7	CHAIN, ROLLER, UPPER TAILINGS AUGER	140-54	1J21	CONTROL VALVE	50-48
3F24	CHAIN, TAILINGS ELEVATOR CONVEYOR	125-23	2D1	CONTROL VALVE MODULE, SIX STACK SOLENOID	70-14
3G5	CHAIN, UPPER TAILINGS AUGER	125-28	1J22	CONTROL VALVE SOLENOID (4-WHEEL DRIVE)	50-49
4C9	CHANNEL, CROSS AUGER	150-32	1J8	CONTROL VALVE, HYDROSTATIC DRIVE DISPLACEMENT	50-32
4B11	CHARGE HOUSING, VERTICAL UNLOADING AUGER	150-10	2D14	CONTROL VALVE, SOLENOID, AUGER SWING	70-28
1J7	CHARGE PUMP, HYDROSTATIC	50-31	2D14	CONTROL VALVE, SOLENOID, REEL FORE/AFT	70-28
2E24	CHECK VALVE, CHAFF SPREADER CONTROL	70-64	2E24	CONTROL, CHAFF SPREADER	70-64
3G8	CHOPPER DOOR	130-1	1F6	CONVENIENCE OUTLET KIT	40-12
3J1	CHOPPER DRIVES (FRONT)	140-48	2E17	CONVERSION KIT, REEL FORE AND AFT	70-56
3G13	CHOPPER HOUSING AND KNIFEBANK	130-6	3I16	CONVEYOR AUGERS, STRAW WALKER, SIEVE AND CHAFFER DRIVE	140-38
3G15	CHOPPER TRANSPORT SPROCKETS	130-8	3F7	CONVEYOR CHAIN, CLEAN GRAIN	125-6
3G11	CHOPPER, TRI-ROD	130-4	3C3	CONVEYOR, FEEDER HOUSE	100-26
4B9	CHUTE, GRAIN TANK CLEAN OUT	150-8	1C9	COOLANT CONDITIONER, ENGINE	25-2
2H23	CIRCUIT BOARD, ARMREST	90-24	1B22	COOLANT HEATER, ENGINE BLOCK	20-22
1G14	CIRCUIT BOARD, ELECTRONICS MODULE	40-48	1B11	COOLANT RECOVERY TANK	20-10
2I13	CIRCUIT BOARD, OVERHEAD CONSOLE	90-38	1C9	COOLANT SCAN TEST KIT	25-2
1G16	CIRCUIT BREAKER, RELAY PANEL	40-50	1B13	COOLING FAN BELT	20-12
3F7	CLEAN GRAIN CONVEYOR CHAIN	125-6	3G17	CORN DEFLECTOR	130-11
3J10	CLEAN GRAIN ELEVATOR DRIVE TIGHTENER	140-58	2G1	CORNER PANEL, REAR, L H	80-18
3F13	CLEAN GRAIN ELEVATOR GEARCASE	125-12	2I11	CORNERPOST DISPLAY PANEL, R.H.	90-36
3F3	CLEAN GRAIN ELEVATOR SHAFT, UPPER, SPROCKET AND SHEAVE	125-2	3H23	COUNTERSHAFT AND VARIABLE SHEAVE	140-18
3F11	CLEAN GRAIN LOADING AUGER	125-10	3I12	COUNTERSHAFT DRIVE, SECONDARY	140-34
3F9	CLEAN GRAIN LOADING AUGER HOUSING, UPPER	125-8	4C12	COUNTERSHAFT DRIVE, UNLOADING AUGER	150-36
3F5	CLEAN GRAIN LOWER AUGER AND HINGED DOOR	125-4	3H20	COUNTERSHAFT, PRIMARY GEARCASE	140-14
3F7	CLEAN GRAIN LOWER CONVEYOR CHAIN	125-6	3H18	COUNTERSHAFT, PRIMARY, SEPARATOR	140-12
4B9	CLEAN OUT CHUTE, GRAIN TANK	150-8	1B18	COUPLING WITH HUB, ENGINE-TRANSMISSION	20-17
1E15	CLEANER, AIR AND INTAKE	30-16	1I8	COUPLINGS, AXLE	50-5
3E5	CLEANING FAN INTAKE SHIELDS	120-4	1C22	COVER, ACCESS, INJECTION PUMP GEAR	25-16
1H21	CLEANING SHOE INSPECTION LIGHT	40-84	1E13	COVER, ENGINE	30-14
3E2	CLEANOUT DOOR, SUPPLY AUGER	120-1	2G16	COVER, ENGINE COMPARTMENT	80-34
2J13	CLUTCH, COMPRESSOR	95-13	1J3	COVER, HYDROSTATIC PUMP	50-26
3B23	CLUTCH, FEEDER HOUSE UPPER SHAFT	100-22	1J15	COVER, INNER - CAM LOBE MOTOR	50-40
3H22	CLUTCH, HEADER ELECTROMAGNETIC	140-17	4C23	COVER, MOISTURE SENSOR, YIELD MAPPING	155-8
3H14	CLUTCH, MAIN GEARCASE	140-8	1D12	COVER, OIL FILLER OPENING	25-32
3G1	CLUTCH, SLIP, LOWER TAILINGS AUGER	125-24	4C17	COVER, POSITION RECEIVER, YIELD MAPPING	155-2
3I16	CLUTCH, SLIP, STRAW WALKER, CONVEYOR AUGERS	140-38	1D4	COVER, ROCKER ARM	25-23
1E10	COLD WEATHER STARTING AID	30-11	1B19	COVER, STARTER RELAY	20-18
2J14	COMPRESSOR HARDWARE KIT	95-14	1D16	COVER, THERMOSTAT	25-36
2J15	COMPRESSOR PARTS (650301-)	95-15	3C23	COVER, THRESHING CYLINDER	110-2
2J12	COMPRESSOR, AIR CONDITIONER, HOSE	95-12	1C22	COVER, TIMING GEAR	25-16
2J11	COMPRESSOR, AIR CONDITIONING, R134A	95-11	4C9	COVERS AND CHANNEL, CROSS AUGER	150-32
2J13	COMPRESSOR, CLUTCH	95-13	4D1	COVERS, MOISTURE SENSOR, YIELD MAPPING	155-10
1H5	CONCAVE ADJUSTING MOTOR	40-67	4D1	COVERS, WHEN MOISTURE SENSOR IS NOT USED YIELD MAPPING	155-10
3D11	CONCAVE ASSEMBLY AND BEATER GRATE	110-16	1B24	CRANKCASE, ENGINE OIL DRAIN	20-24
1H6	CONCAVE INDICATOR	40-68	3D23	CRANKS, STRAW WALKER AND DRIVE	110-28
3D13	CONCAVE, SPIKE-TOOTH	110-18	1C18	CRANKSHAFT	25-12
2C20	CONDENSER, A/C AND OIL COOLER	70-8	1C19	CRANKSHAFT DAMPENERS AND PULLEY	25-13
1C9	CONDITIONER, COOLANT	25-2	1C21	CRANKSHAFT REAR OIL SEAL	25-15
1C17	CONNECTING ROD	25-11	1C18	CRANKSHAFT THRUST BEARING	25-12
1E22	CONNECTORS, ELECTRICAL, WEATHERPACK	40-2	3D23	CRANKSHAFT, STRAW WALKER	110-28
1E8	CONNECTORS, STARTING AID	30-9	4C5	CROSS AUGER BEARING PLATE, L.H.	150-28
1F5	CONNECTORS, SUPPLEMENTARY TERMINALS	40-10	4C9	CROSS AUGER COVERS AND CHANNEL	150-32
2I13	CONSOLE, OVERHEAD	90-38	4C7	CROSS AUGERS, GRAIN TANK	150-30
2H8	CONTAINER, TRASH	90-8	3D16	CURTAIN, BEATER GRATE	110-21
2E19	CONTOUR MASTER HYDRAULIC HOSES, L.H.	70-58	3D6	CURTAIN, SEPARATOR, RASP BAR CYLINDER	110-11
2D7	CONTOUR MASTER SOLENOID CONTROL RELIEF VALVE	70-20	3G22	CURTAIN, SPREADER	130-16
2E22	CONTOUR MASTER TILT CYLINDER	70-61	4B7	CURTAINS, GRAIN TANK	150-6
2E23	CONTOUR MASTER TILT CYLINDER HOSES AND FITTINGS	70-63	2H20	CUSHION, OPERATOR'S SEAT	90-20
3B21	CONTOUR MASTER, FEEDER HOUSE SHELL	100-20	2H16	CUSHIONS, SEAT, PASSENGER	90-16
1J1	CONTROL CABLES, HYDROSTATIC DRIVE	50-24	1C10	CYLINDER BLOCK	25-4
2H23	CONTROL PANEL, OPERATOR'S ARMREST	90-24	3C23	CYLINDER COVER, THRESHING	110-2
			3D3	CYLINDER DOOR (CORN)	110-8

ALPHABETICAL INDEX - CONTINUED

GRID		PAGE	GRID		PAGE
3D1	CYLINDER DOOR (GRAIN)	110 - 6	3B5	DIPSTICK, REVERSER GEAR BOX.....	100 - 4
3110	CYLINDER DRIVE ADJUSTING BRACKET, DUAL-RANGE	140 - 32	3G24	DISC, CHAFF SPREADER	130 - 18
311	CYLINDER DRIVE GEARCASE, DUAL-RANGE	140 - 22	1J8	DISPLACEMENT CONTROL VALVE, HYDROSTATIC ..	50 - 32
316	CYLINDER DRIVE INTERMEDIATE SHAFT MOUNTING, DUAL-RANGE	140 - 28	4C19	DISPLAY BRACKET, YIELD MAPPING	155 - 4
318	CYLINDER DRIVE INTERMEDIATE SHEAVE	140 - 30	4D6	DISPLAY DECALS, YIELD MONITOR	155 - 15
314	CYLINDER DRIVE TIGHTENER, DUAL-RANGE	140 - 26	2111	DISPLAY PANEL, R.H. CORNERPOST	90 - 36
1D1	CYLINDER HEAD AND GASKET	25 - 20	4D3	DISPLAY W/DATASTORE	155 - 12
1C16	CYLINDER HEAD REMOVAL GASKET SET	25 - 10	4C19	DISPLAY, YIELD MAPPING	155 - 4
1C17	CYLINDER LINER	25 - 11	2H10	DOMELIGHT, CAB.....	90 - 10
1C17	CYLINDER LINER O-RING KIT	25 - 11	2F19	DOOR AND FRONT PANEL, LEFT	80 - 12
3D5	CYLINDER SHEAR BAR	110 - 10	2H14	DOOR LATCH, CAB	90 - 14
2D12	CYLINDER SPEED AND REEL LIFT, VALVE	70 - 26	2H12	DOOR, CAB AND GLASS	90 - 12
2D24	CYLINDER SPEED HYDRAULIC HOSE	70 - 38	3G8	DOOR, CHOPPER.....	130 - 1
2B11	CYLINDER, BRAKE SLAVE	60 - 10	3F7	DOOR, CLEAN GRAIN ELEVATOR CONVEYOR	125 - 6
2B9	CYLINDER, BRAKE, MASTER	60 - 8	3F5	DOOR, CLEAN GRAIN LOWER AUGER	125 - 4
3H23	CYLINDER, COUNTERSHAFT	140 - 18	3D3	DOOR, CYLINDER (CORN)	110 - 8
3H25	CYLINDER, DRIVE, SINGLE RANGE.....	140 - 21	3D1	DOOR, CYLINDER (GRAIN)	110 - 6
4C10	CYLINDER, GRAIN TANK UNLOADING DRIVE	150 - 34	2G20	DOOR, ENGINE ACCESS PLATFORM	80 - 38
2F21	CYLINDER, GULLWING DOOR, GAS OPERATED.....	80 - 14	1E13	DOOR, ENGINE PLATFORM	30 - 14
2D15	CYLINDER, HEADER LIFT, HYDRAULIC	70 - 29	3B19	DOOR, FEEDER HOUSE FRAME	100 - 18
2B5	CYLINDER, MASTER, BRAKE	60 - 4	4B3	DOOR, GRAIN TANK	150 - 2
2C3	CYLINDER, STEERING	60 - 26	2F21	DOOR, GULLWING, L.H.....	80 - 14
3D7	CYLINDER, THRESHING, RASP BAR	110 - 12	2G5	DOOR, GULLWING, R.H.	80 - 22
3D9	CYLINDER, THRESHING, SPIKE TOOTH	110 - 14	2F23	DOOR, LEFT REAR GULLWING	80 - 16
2E22	CYLINDER, TILT, CONTOUR MASTER.....	70 - 61	4C21	DOOR, MASS FLOW SENSOR DEFLECTOR YIELD MAPPING	155 - 6
2E23	CYLINDER, TILT, HOSES AND FITTINGS, CONTOUR MASTER.....	70 - 63	2G7	DOOR, RADIATOR	80 - 24
4B15	CYLINDER, UNLOADING AUGER SWING	150 - 14	1B5	DOOR, ROTARY SCREEN	20 - 4
D					
1C19	DAMPENER, CRANKSHAFT.....	25 - 13	3E2	DOOR, SHOE GRAIN SUPPLY AUGER	120 - 1
4D3	DATASTORE MODULE	155 - 12	3C24	DOOR, STONE TRAP, FEEDER HOUSE	110 - 4
4D5	DATASTORE MODULE	155 - 14	3F21	DOOR, TAILINGS ELEVATOR	125 - 20
4D3	DATASTORE W/DISPLAY.....	155 - 12	1B22	DRAIN PLUG, ENGINE BLOCK COOLANT	20 - 22
4D6	DECALS, DISPLAY, YIELD MONITOR.....	155 - 15	1D10	DRAIN PLUG, ENGINE OIL	25 - 30
4E1	DECALS, FRENCH CANADIAN	170 - 20	1C10	DRAIN VALVE, CYLINDER BLOCK	25 - 4
4D22	DECALS, FRONT AND REAR	170 - 16	1E11	DRAIN VALVE, FUEL	30 - 12
4D24	DECALS, FRONT AND REAR TIRE/WHEEL.....	170 - 18	1B11	DRAIN VALVE, RADIATOR.....	20 - 10
4D20	DECALS, L.H.....	170 - 14	1D14	DRAIN VALVE, WATER PUMP.....	25 - 34
4D6	DECALS, MOISTURE SENSOR, YIELD MONITOR	155 - 15	3J7	DRIVE AND SHIELD, UPPER TAILINGS AUGER.....	140 - 54
4E2	DECALS, PORTUGUESE.....	170 - 21	4C14	DRIVE BELT GUIDE, UNLOADING AUGER	150 - 38
4D18	DECALS, R.H.	170 - 12	1B17	DRIVE BELT IDLER PULLEY	20 - 16
4E3	DECALS, ROMANIAN	170 - 22	3J9	DRIVE CHAIN TIGHTENER, UPPER TAILINGS	140 - 57
4E4	DECALS, RUSSIAN	170 - 23	3C7	DRIVE CHAIN, FEEDER CONVEYOR	100 - 30
4D8	DECALS, SAFETY AND LOCATIONS	170 - 2	3J10	DRIVE IDLER, CLEAN GRAIN ELEVATOR	140 - 58
4D10	DECALS, SAFETY AND LOCATIONS	170 - 4	3H18	DRIVE SHAFT, COUNTERSHAFT AND GEARCASE	140 - 12
4D12	DECALS, SAFETY AND LOCATIONS	170 - 6	1I22	DRIVE SHAFT, FINAL DRIVE.....	50 - 21
4D14	DECALS, SAFETY AND LOCATIONS	170 - 8	3C20	DRIVE SHAFT, FRONT, (FIXED SPEED WITH REVERSER).....	100 - 44
4D16	DECALS, SAFETY AND LOCATIONS	170 - 10	3H14	DRIVE SHAFT, MAIN GEARCASE.....	140 - 8
4E5	DECALS, SPANISH	170 - 24	3C18	DRIVE SHAFT, UPPER, (FIXED SPEED WITH RE VERSER)	100 - 42
4E6	DECALS, UKRAINIAN	170 - 25	1I8	DRIVE SHAFTS	50 - 5
4D6	DECALS, YIELD MONITOR	155 - 15	3B15	DRIVE SHIELD WITH AIRFLOW, L.H.	100 - 14
4C21	DEFLECTOR DOOR, MASS FLOW SENSOR YIELD MAPPING.....	155 - 6	3B13	DRIVE SHIELD WITHOUT AIRFLOW, L.H.	100 - 12
3H3	DEFLECTOR, CHAFF SPREADER.....	130 - 22	3B17	DRIVE SHIELD, R.H.	100 - 16
3G17	DEFLECTOR, CORN	130 - 11	2G9	DRIVE SHIELD, R.H. REAR	80 - 27
3D1	DEFLECTOR, CYLINDER DOOR (GRAIN)	110 - 6	3J5	DRIVE SHIELDS, STRAW CHOPPER	140 - 52
3B19	DEFLECTOR, FEEDER HOUSE FRAME	100 - 18	3J10	DRIVE TIGHTENER, CLEAN GRAIN ELEVATOR	140 - 58
3G9	DEFLECTOR, TAIL BOARDS	130 - 2	3B11	DRIVE TIGHTENER, FEEDER HOUSE	100 - 10
1I20	DIFFERENTIAL SHAFTS, AND GEARS.....	50 - 18	3B7	DRIVE TIGHTENER, FIXED SPEED FEEDER HOUSE.....	100 - 6
3H20	DIPSTICK, COUNTERSHAFT GEARCASE	140 - 14	3B9	DRIVE TIGHTENER, VARIABLE SPEED	100 - 8
1D13	DIPSTICK, ENGINE OIL	25 - 33	1I9	DRIVE WHEELS	50 - 6
3H16	DIPSTICK, MAIN ENGINE GEARCASE	140 - 10	1I10	DRIVE WHEELS, HIGH FLOATATION.....	50 - 7
			2E3	DRIVE, BELT PICKUP / REEL PUMP MOUNTING SHEAVE	70 - 42
			3J1	DRIVE, CHOPPER (FRONT).....	140 - 48
			4C12	DRIVE, COUNTERSHAFT, UNLOADING AUGER.....	150 - 36

ALPHABETICAL INDEX - CONTINUED

<i>GRID</i>		<i>PAGE</i>	<i>GRID</i>		<i>PAGE</i>
3I24	DRIVE, FAN, SPEED CONTROL SHEAVE LINKAGE....	140 - 46	3E13	ELEMENT, CHAFFER	120 - 12
3I14	DRIVE, GEARCASE, STRAW WALKER.....	140 - 36	3E15	ELEMENT, CHAFFER EXTENSION	120 - 14
1J10	DRIVE, HYDROSTATIC MOTOR.....	50 - 34	3E19	ELEMENT, SIEVE	120 - 18
1K1	DRIVE, HYDROSTATIC OIL HOSES, UPPER (4-WHEEL DRIVE).....	50 - 52	3F7	ELEVATOR, LOWER, CLEAN GRAIN	125 - 6
1J23	DRIVE, HYDROSTATIC, LOWER OIL LINES (2-WHEEL DRIVE).....	50 - 50	3F21	ELEVATOR, TAILINGS	125 - 20
1K7	DRIVE, HYDROSTATIC, LOWER OIL LINES (4-WHEEL DRIVE).....	50 - 58	2G20	ENGINE ACCESS PLATFORM.....	80 - 38
2E9	DRIVE, REEL, LINES AND HOSES, L.H.	70 - 48	1B22	ENGINE BLOCK COOLANT HEATER	20 - 22
3I12	DRIVE, SECONDARY COUNTERSHAFT.....	140 - 34	1E13	ENGINE COMPARTMENT.....	30 - 14
3H25	DRIVE, SINGLE RANGE CYLINDER	140 - 21	2G16	ENGINE COMPARTMENT.....	80 - 34
3J3	DRIVE, STRAW CHOPPER (REAR).....	140 - 50	1C9	ENGINE COOLANT CONDITIONER.....	25 - 2
3B3	DRIVE, VARIABLE SPEED, FRONT.....	100 - 2	1D1	ENGINE CYLINDER HEAD GASKET	25 - 20
1B13	DRIVES, ENGINE FAN	20 - 12	1B13	ENGINE FAN AND DRIVES	20 - 12
3I16	DRIVES, STRAW WALKER, CONVEYOR AUGERS, SIEVE AND CHAFFER DRIVE	140 - 38	1C4	ENGINE FITTINGS AND BELT	20 - 29
2B13	DRUM, BRAKE.....	60 - 12	1C20	ENGINE FLYWHEEL	25 - 14
3C3	DRUM, CHAIN AND FEEDER CONVEYOR IDLER SHAFT	100 - 26	1C24	ENGINE FRONT PLATE	25 - 18
2J9	DRYER, AIR CONDITIONER	95 - 9	1B18	ENGINE GEARCASE COUPLING WITH HUB.....	20 - 17
3I3	DUAL RANGE LOCKOUT ARM	140 - 25	3H8	ENGINE GEARCASE OIL FILTER ASSEMBLY	140 - 2
3I10	DUAL-RANGE CYLINDER DRIVE ADJUSTING BRACKET.....	140 - 32	3H10	ENGINE GEARCASE PRESSURE REGULATOR	140 - 4
3I1	DUAL-RANGE CYLINDER DRIVE GEARCASE	140 - 22	3H16	ENGINE GEARCASE, SEPARATOR AND PUMP DRIVE.....	140 - 10
3I6	DUAL-RANGE CYLINDER DRIVE INTERMEDIATE SHAFT MOUNTING.....	140 - 28	1C1	ENGINE INTERCOOLER.....	20 - 26
3I8	DUAL-RANGE CYLINDER DRIVE INTERMEDIATE SHEAVE	140 - 30	1C14	ENGINE MAJOR OVERHAUL GASKET SET.....	25 - 8
3I4	DUAL-RANGE CYLINDER DRIVE TIGHTENER	140 - 26	1C3	ENGINE MOUNTS	20 - 28
2J7	DUCTS, HEATER AND AIR CONDITIONING	95 - 7	1C3	ENGINE MOUNTS AND REAR SUPPORT	20 - 28
3C5	DUST FAN, FEEDER HOUSE - R.H.	100 - 28	1C8	ENGINE OIL (TORQ-GARD PLUS-50).....	25 - 1
3C16	DUST FAN, L.H. SIDE FEEDER HOUSE.....	100 - 40	1C10	ENGINE OIL BY-PASS VALVE	25 - 4
	E		1D13	ENGINE OIL DIPSTICK AND TUBE	25 - 33
1G14	ECU MODULE	40 - 48	1D10	ENGINE OIL DRAIN VALVE	25 - 30
1G18	ECU, ELECTRONIC CONTROL UNIT	40 - 52	1D12	ENGINE OIL FILL CAP	25 - 32
1F13	ELECTRICAL WIRING HARNESS, L.H. MAIN.....	40 - 20	1D4	ENGINE OIL FILL PLUG	25 - 23
1F19	ELECTRICAL WIRING HARNESS, R.H. MAIN W/GREENSTAR.....	40 - 28	1D8	ENGINE OIL FILTER	25 - 28
1G1	ELECTRICAL WIRING HARNESS, STEERING	40 - 34	1D10	ENGINE OIL PAN	25 - 30
1G16	ELECTRICAL CIRCUIT BREAKER	40 - 50	1D7	ENGINE OIL PUMP INTAKE AND HOUSING	25 - 26
1E24	ELECTRICAL CONNECTOR SERVICE KIT	40 - 4	1C17	ENGINE PISTON	25 - 11
1F1	ELECTRICAL CONNECTOR SERVICE KIT	40 - 6	1E13	ENGINE PLATFORM	30 - 14
1F6	ELECTRICAL CONVENIENCE OUTLET	40 - 12	1C12	ENGINE SHORT BLOCK.....	25 - 6
1F8	ELECTRICAL ENGINE WIRING HARNESS.....	40 - 14	1E9	ENGINE TACHOMETER SENSOR	30 - 10
1E22	ELECTRICAL TERMINALS AND CONNECTORS, WEATHERPACK	40 - 2	1D5	ENGINE VENTILATING SYSTEM.....	25 - 24
1F3	ELECTRICAL TERMINALS AND WIRING CONNECTORS	40 - 8	1F8	ENGINE WIRING HARNESS.....	40 - 14
1G3	ELECTRICAL WIRING HARNESS, AIR CONDITIONING.....	40 - 36	1B18	ENGINE-TRANSMISSION COUPLING WITH HUB	20 - 17
1F23	ELECTRICAL WIRING HARNESS, ARMREST	40 - 32	2J10	EVAPORATOR HEATER/AIR CONDITIONER	95 - 10
1F21	ELECTRICAL WIRING HARNESS, CAB	40 - 30	1D22	EXHAUST MANIFOLD	25 - 43
1G9	ELECTRICAL WIRING HARNESS, HARVESTRAK	40 - 42	1D22	EXHAUST MANIFOLD GASKET	25 - 43
1F11	ELECTRICAL WIRING HARNESS, L.H. MAIN.....	40 - 18	1E17	EXHAUST PIPE AND MUFFLER	30 - 18
1F15	ELECTRICAL WIRING HARNESS, R.H. MAIN	40 - 23	1D1	EXHAUST VALVE	25 - 20
1F16	ELECTRICAL WIRING HARNESS, R.H. MAIN W/O GREENSTAR	40 - 24	1B22	EXTENSION CORD, ENGINE BLOCK COOLANT HEATER.....	20 - 22
1F18	ELECTRICAL WIRING HARNESS, R.H.MAIN WITH GREENSTAR.....	40 - 27	3E15	EXTENSION ELEMENT, CHAFFER	120 - 14
3H22	ELECTROMAGNETIC HEADER CLUTCH	140 - 17	1I7	EXTENSION, AXLE	50 - 4
1G18	ELECTRONIC CONTROL UNIT (ECU).....	40 - 52	3G8	EXTENSION, CHOPPER DOOR.....	130 - 1
1G14	ELECTRONICS MODULE, CENTRAL AND CIRCUIT BOARDS	40 - 48	2I19	EXTENSION, LADDER ASSEMBLY	90 - 44
				F	
			1B17	FAN BELT IDLER PULLEY	20 - 16
			1B15	FAN DRIVE BELT TENSIONER	20 - 14
			3I22	FAN DRIVE SPEED CONTROL LINKAGE.....	140 - 44
			3I24	FAN DRIVE SPEED CONTROL SHEAVE LINKAGE.....	140 - 46
			1B15	FAN DRIVE SUPPORT	20 - 14
			3I20	FAN DRIVE, CLEANING, SEPARATOR.....	140 - 42
			1G19	FAN, ALTERNATOR	40 - 54
			3E5	FAN, CLEANING	120 - 4
			3C5	FAN, DUST, FEEDER HOUSE	100 - 28
			3C16	FAN, DUST, L.H. SIDE FEEDER HOUSE	100 - 40
			1B13	FAN, ENGINE.....	20 - 12
			3C16	FAN, FEEDER HOUSE DUST FAN, L.H. SIDE	100 - 40

ALPHABETICAL INDEX - CONTINUED

GRID		PAGE	GRID		PAGE
2J2	FAN, HEATER AND AIR CONDITIONER.....	95 - 2	3E17	FRAME, CHAFFER	120 - 16
3C7	FEEDER CONVEYOR BELT	100 - 30	3B19	FRAME, FEEDER HOUSE	100 - 18
3C4	FEEDER CONVEYOR BRACKET	100 - 27	1B9	FRAME, RADIATOR SHELL	20 - 8
3C4	FEEDER CONVEYOR DRIVE CHAIN	100 - 27	1B7	FRAME, RADIATOR SHELL AND SEALS	20 - 6
3C7	FEEDER CONVEYOR DRIVE CHAIN BRACKET	100 - 30	2F9	FRAME, SEPARATOR.....	80 - 2
3C4	FEEDER CONVEYOR IDLER	100 - 27	3E21	FRAME, SIEVE	120 - 20
3C3	FEEDER CONVEYOR IDLER SHAFT, DRUM AND CHAIN	100 - 26	4E1	FRENCH CANADIAN DECALS AND LABELS	170 - 20
1H1	FEEDER HOUSE BACKSHAFT SPEED SENSOR	40 - 62	2F19	FRONT PANEL AND DOOR, LEFT	80 - 12
3B11	FEEDER HOUSE DRIVE TIGHTENER.....	100 - 10	2G3	FRONT PANEL, RIGHT.....	80 - 20
3B7	FEEDER HOUSE DRIVE TIGHTENER (FIXED SPEED).....	100 - 6	1C24	FRONT PLATE, ENGINE.....	25 - 18
3C5	FEEDER HOUSE DUST FAN - R.H.	100 - 28	2F15	FRONT SHIELD ASSEMBLY, R.H.....	80 - 8
3C16	FEEDER HOUSE DUST FAN, L.H. SIDE.....	100 - 40	2B19	FRONT STEERING HOSES AND LINES.....	60 - 18
3C1	FEEDER HOUSE FLOOR	100 - 24	3B3	FRONT VARIABLE DRIVE SHEAVE	100 - 2
3B19	FEEDER HOUSE FRAME	100 - 18	1E5	FUEL FILTER.....	30 - 6
3C20	FEEDER HOUSE FRONT DRIVE SHAFT, SHEAVE.....	100 - 44	1E5	FUEL FILTER SERVICE KIT.....	30 - 6
3C14	FEEDER HOUSE POSITION SENSOR	100 - 38	1E4	FUEL INJECTION NOZZLE.....	30 - 4
3C12	FEEDER HOUSE RETURN FLOOR.....	100 - 36	1E2	FUEL INJECTION PUMP AND LINES	30 - 2
2I7	FEEDER HOUSE REVERSER FOOT CONTROL	90 - 32	1E11	FUEL PUMP AND LEVEL SENSOR.....	30 - 12
3B21	FEEDER HOUSE SHELL, CONTOUR MASTER	100 - 20	1E11	FUEL SENDER	30 - 12
3C18	FEEDER HOUSE UPPER DRIVE SHAFT, (FIXED SPEED WITH REVERSER).....	100 - 42	2G18	FUEL TANK STEPS AND MOUNTING BRACKETS	80 - 36
3B23	FEEDER HOUSE UPPER SHAFT	100 - 22	1E11	FUEL TANK, SUPPORTS, AND FITTINGS	30 - 12
3C9	FEEDER HOUSE VARIABLE DRIVE, HOSE	100 - 33	1E7	FUEL TRANSFER PUMP	30 - 8
3B21	FEEDER HOUSE WEAR PLATES, CONTOUR MASTER	100 - 20			
3C24	FEEDER HOUSE/SEPARATOR SEAL, STONE TRAP ..	110 - 4		G	
3C10	FEEDER HOUSE, UPPER COUNTERSHAFT VARIABLE DRIVE	100 - 34	1C16	GASKET SET, CYLINDER HEAD REMOVAL	25 - 10
2H16	FIELD OFFICE	90 - 16	1C14	GASKET SET, ENGINE MAJOR OVERHAUL	25 - 8
1E15	FILTER, AIR CLEANER.....	30 - 16	1C16	GASKET SET, IN VEHICLE OVERHAUL.....	25 - 10
2J4	FILTER, AIR, RECIRCULATION, HEATER & A/C	95 - 4	1D1	GASKET, CYLINDER HEAD	25 - 20
2J6	FILTER, CAB AIR	95 - 6	1D8	GASKET, ENGINE OIL FILTER	25 - 28
2J10	FILTER, EVAPORATOR HEATER, A/C	95 - 10	1D22	GASKET, EXHAUST MANIFOLD	25 - 43
1E5	FILTER, FUEL	30 - 6	1C10	GASKET, PLASTIC, CYLINDER BLOCK	25 - 4
1E11	FILTER, FUEL TANK.....	30 - 12	1D4	GASKET, ROCKER ARM COVER	25 - 23
1J7	FILTER, HYDROSTATIC CHARGE PUMP.....	50 - 31	1C22	GASKET, TIMING GEAR COVER.....	25 - 16
2E21	FILTER, MAIN HYDRAULIC	70 - 60	1D21	GASKET, TURBOCHARGER	25 - 42
3H8	FILTER, OIL, ENGINE GEARCASE	140 - 2	2D22	GAUGE, ACCUMULATOR PRESSURE	70 - 36
1D15	FILTER, WATER PUMP	25 - 35	3B5	GEAR BOX, REVERSER.....	100 - 4
1G5	FILTER, WINDSHIELD WASHER	40 - 38	1C25	GEAR, CAMSHAFT	25 - 19
1I23	FINAL DRIVE	50 - 22	1C18	GEAR, CRANKSHAFT	25 - 12
1I24	FINAL DRIVE AXLE, GEAR AND BEARINGS	50 - 23	1D7	GEAR, ENGINE OIL PUMP.....	25 - 26
1I22	FINAL DRIVE SHAFT	50 - 21	1I23	GEAR, FINAL DRIVE.....	50 - 22
3D15	FINGER GRATE, SPIKE-TOOTH	110 - 20	1E2	GEAR, FUEL INJECTION PUMP DRIVE	30 - 2
3C16	FINGER, FEEDER HOUSE DUST FAN, L.H.	100 - 40	3B5	GEAR, REVERSER GEAR BOX.....	100 - 4
3C5	FINGER, FEEDER HOUSE DUST FAN, R.H.	100 - 28	3G20	GEAR, STRAW SPREADER.....	130 - 14
3E9	FINGER, PRECLEANER CHAFFER	120 - 8	3I14	GEARCASE DRIVE, STRAW WALKER	140 - 36
3E15	FINGERS, PLASTIC, CHAFFER	120 - 14	3H18	GEARCASE MOUNTING	140 - 12
2F1	FITTINGS, CHAFF SPREADER	70 - 66	3F13	GEARCASE, CLEAN GRAIN ELEVATOR	125 - 12
1E11	FITTINGS, FUEL TANK.....	30 - 12	3I1	GEARCASE, DUAL-RANGE CYLINDER DRIVE	140 - 22
2E23	FITTINGS, TILT CYLINDER - CONTOUR MASTER	70 - 63	3H14	GEARCASE, ENGINE	140 - 8
1I5	FIXED REAR AXLE	50 - 2	3H16	GEARCASE, ENGINE	140 - 10
2C9	FIXED REAR AXLE STEERING TIE RODS.....	60 - 33	4B22	GEARCASE, HORIZONTAL UNLOADING AUGER	150 - 21
3B7	FIXED SPEED FEEDER HOUSE DRIVE TIGHTENER..	100 - 6	3H12	GEARCASE, MAIN.....	140 - 6
2H6	FLOOR PANELS, CAB	90 - 6	3H20	GEARCASE, PRIMARY COUNTERSHAFT	140 - 14
3C1	FLOOR, FEEDER HOUSE	100 - 24	4B9	GEARCASE, VERTICAL AUGER LOWER	150 - 8
3C12	FLOOR, FEEDER HOUSE, RETURN.....	100 - 36	1I20	GEARS, DIFFERENTIAL	50 - 18
2E5	FLOW CONTROL VALVE, REEL DRIVE	70 - 44	3E3	GEARS, SHOE GRAIN SUPPLY AUGERS	120 - 2
4C21	FLOW SENSOR, MASS, YIELD MAPPING	155 - 6	1I16	GEARS, TRANSMISSION	50 - 14
1C21	FLYWHEEL HOUSING	25 - 15	1I18	GEARS, TRANSMISSION PINION	50 - 16
1C20	FLYWHEEL, ENGINE	25 - 14	2I9	GEARSHIFT LEVER AND LINKAGE	90 - 34
1D3	FOLLOWERS, CAMSHAFT.....	25 - 22	2H12	GLASS, CAB AND DOOR.....	90 - 12
2I7	FOOT PEDAL, FEEDER HOUSE REVERSER	90 - 32	1G10	GRAIN LOSS MONITOR	40 - 43
1K5	FOUR WHEEL DRIVE HYDRAULIC LINES AND HOSES, L.H.	50 - 56	4B7	GRAIN TANK AND CURTAINS.....	150 - 6
3E11	FRAME ARMS, PRECLEANER CHAFFER	120 - 10	4B5	GRAIN TANK BASE.....	150 - 4
			4C7	GRAIN TANK CROSS AUGERS.....	150 - 30
			1G13	GRAIN TANK FULL BIN SENSOR	40 - 46
			4C15	GRAIN TANK SAMPLING TROUGH.....	150 - 39

ALPHABETICAL INDEX - CONTINUED

GRID		PAGE	GRID		PAGE
4B3	GRAIN TANK TOP.....	150 - 2	2F23	HINGE, LEFT REAR GULLWING	80 - 16
4C10	GRAIN TANK UNLOADING DRIVE CYLINDER.....	150 - 34	1B9	HINGE, RADIATOR ACCESS DOOR	20 - 8
4B11	GRAIN TANK VERTICAL UNLOADING AUGER	150 - 10	3F5	HINGED DOOR, LOWER AUGER, CLEAN GRAIN.....	125 - 4
1G12	GRAIN TANK WIRING HARNESS	40 - 45	2G14	HOOD, REAR.....	80 - 32
3D16	GRATE CURTAIN, BEATER	110 - 21	4B22	HORIZONTAL UNLOADING AUGER DRIVE GEARCASE	150 - 21
3D11	GRATE, BEATER (NARROW).....	110 - 16	4B23	HORIZONTAL UNLOADING AUGER HOUSING	150 - 22
3D15	GRATE, FINGER, SPIKE-TOOTH.....	110 - 20	4C1	HORIZONTAL UNLOADING AUGER HOUSING (EXPORT)	150 - 24
3D13	GRATE, SPIKE TOOTH CONCAVE	110 - 18	4B17	HORIZONTAL UNLOADING AUGER SWIVEL.....	150 - 16
2H10	GRILLE, SPEAKER	90 - 10	2H5	HORN ASSEMBLY.....	90 - 4
3G18	GUARD AND STRAW SPREADER MOUNTING	130 - 12	2I5	HORN BUTTON	90 - 30
2F21	GULLWING DOOR, L.H.	80 - 14	2D20	HOSE AND LINES, ONE GALLON ACCUMULATOR ...	70 - 34
2F23	GULLWING DOOR, LEFT REAR	80 - 16	2J12	HOSE, AIR CONDITIONER COMPRESSOR	95 - 12
2G5	GULLWING DOOR, R.H.....	80 - 22	1C1	HOSE, INTERCOOLER	20 - 26
			3C9	HOSE, VARIABLE DRIVE, FEEDER HOUSE	100 - 33
	H		1D5	HOSE, VENTILATION SYSTEM	25 - 24
2H6	HANDLE, CAB	90 - 6	2D16	HOSES AND LINES, HYDRAULIC, HEADER LIFT	70 - 30
2H14	HANDLE, CAB DOOR	90 - 14	1K3	HOSES AND LINES, HYDROSTATIC OIL COOLER.....	50 - 54
3E13	HANDLE, CHAFFER ELEMENT	120 - 12	2E9	HOSES AND LINES, REEL DRIVE, L.H.	70 - 48
3D3	HANDLE, CYLINDER DOOR (CORN)	110 - 8	2E17	HOSES AND LINES, REEL LIFT	70 - 56
3D1	HANDLE, CYLINDER DOOR (GRAIN)	110 - 6	2B19	HOSES AND LINES, STEERING, FRONT.....	60 - 18
3C1	HANDLE, FEEDER HOUSE LATCH.....	100 - 24	2C1	HOSES AND LINES, STEERING, REAR	60 - 24
2F21	HANDLE, GULLWING DOOR, L.H.....	80 - 14	2C22	HOSES AND LINES, WET CLUTCH OIL COOLER	70 - 10
2G5	HANDLE, GULLWING DOOR, R.H.	80 - 22	1K5	HOSES AND LINES, 4-WHEEL DRIVE, L.H.....	50 - 56
2H23	HANDLE, HYDROSTATIC	90 - 24	2F3	HOSES, CHAFF SPREADER	70 - 68
3E2	HANDLE, SHOE GRAIN AUGER CLEANOUT.....	120 - 1	2F5	HOSES, CHAFF SPREADER	70 - 70
3E19	HANDLE, SIEVE ELEMENT	120 - 18	1K9	HOSES, CONTROL VALVE TO CAM LOBE MOTOR....	50 - 60
3H1	HANDLES AND SHIELDS, CHAFF SPREADER	130 - 20	4C10	HOSES, GRAIN TANK UNLOADING DRIVE CYLINDER	150 - 34
2G16	HANDRAIL, ENGINE COMPARTMENT	80 - 34	2C16	HOSES, HYDRAULIC RETURN	70 - 4
2I20	HANDRAIL, LANDING, L.H.	90 - 46	2E19	HOSES, HYDRAULIC, CONTOUR MASTER L.H.	70 - 58
2I22	HANDRAIL, LANDING, R.H.	90 - 48	2D24	HOSES, HYDRAULIC, CYLINDER SPEED	70 - 38
2I17	HANDRAIL, PLATFORM EXTENSIONS	90 - 42	2E7	HOSES, HYDRAULIC, REEL PUMP.....	70 - 46
2G7	HANDRAIL, RADIATOR DOOR.....	80 - 24	2B17	HOSES, HYDRAULIC, STEERING, UPPER.....	60 - 16
2I24	HARDWARE KIT, CAB	90 - 50	2B21	HOSES, LINES, STEERING, L.H.....	60 - 20
2I5	HARDWARE, STEERING COLUMN	90 - 30	1J23	HOSES, OIL, HYDROSTATIC DRIVE, LOWER (2-WHEEL DRIVE).....	50 - 50
1F23	HARNESS, ARMREST WIRING	40 - 32	1K7	HOSES, OIL, HYDROSTATIC DRIVE, LOWER (4-WHEEL DRIVE).....	50 - 58
4D3	HARNESS, DATASTORE	155 - 12	1K1	HOSES, OIL, HYDROSTATIC DRIVE, UPPER (4-WHEEL DRIVE).....	50 - 52
1G13	HARNESS, FULL BIN SENSOR	40 - 46	2C14	HOSES, PRESSURE, HYDRAULIC	70 - 2
1F21	HARNESS, MAIN CAB WIRING	40 - 30	1B11	HOSES, RADIATOR	20 - 10
1F10	HARNESS, MAIN WIRING, L.H.	40 - 17	2E11	HOSES, REEL DRIVE, HYDRAULIC, FRONT	70 - 50
1F13	HARNESS, MAIN WIRING, L.H.	40 - 20	2E23	HOSES, TILT CYLINDER - CONTOUR MASTER	70 - 63
4C23	HARNESS, MOISTURE SENSOR MOTOR, YIELD MAPPING	155 - 8	4B13	HOSES, UNLOADING AUGER SWING CYLINDER	150 - 12
1F15	HARNESS, R.H. MAIN WIRING HARNESS WITHOUT GREENSTAR.....	40 - 23	3E3	HOUSING AND SHOE GRAIN SUPPLY AUGERS	120 - 2
1F18	HARNESS, R.H. MAIN, WITH GREENSTAR	40 - 27	1I15	HOUSING COVER, TRANSMISSION	50 - 12
1G9	HARVESTRAK WIRING HARNESS	40 - 42	2J4	HOUSING, AIR CONDITIONER/HEATER, LOWER	95 - 4
1D1	HEAD, CYLINDER	25 - 20	2J2	HOUSING, AIR CONDITIONER/HEATER, UPPER	95 - 2
3H22	HEADER ELECTROMAGNETIC CLUTCH	140 - 17	2H23	HOUSING, ARMREST CONTROL PANEL.....	90 - 24
2D8	HEADER HEIGHT CONTROL VALVE	70 - 21	2B9	HOUSING, BRAKE MASTER CYLINDER.....	60 - 8
2D15	HEADER LIFT CYLINDER, HYDRAULIC	70 - 29	2J6	HOUSING, CAB AIR FILTER	95 - 6
2D16	HEADER LIFT HYDRAULIC LINES AND HOSES	70 - 30	1D7	HOUSING, ENGINE OIL PUMP	25 - 26
2D10	HEADER LIFT MODULE, SOLENOID VALVE	70 - 24	1I23	HOUSING, FINAL DRIVE	50 - 22
1G11	HEADLIGHT, UNLOADING AUGER	40 - 44	1C21	HOUSING, FLYWHEEL	25 - 15
2H10	HEADLINER, CAB	90 - 10	4B23	HOUSING, HORIZONTAL UNLOADING AUGER.....	150 - 22
2J4	HEATER AND A/C HOUSING, LOWER	95 - 4	4C1	HOUSING, HORIZONTAL UNLOADING AUGER (EXPORT)	150 - 24
2J7	HEATER AND AIR CONDITIONING DUCTS	95 - 7	1J5	HOUSING, HYDROSTATIC PUMP	50 - 28
2J2	HEATER, AIR CONDITIONING HOUSING, UPPER	95 - 2	1I5	HOUSING, SPINDLE, REAR AXLE	50 - 2
1B22	HEATER, COOLANT, ENGINE BLOCK	20 - 22	2I5	HOUSING, STEERING COLUMN	90 - 30
1I10	HIGH FLOATATION DRIVE WHEELS	50 - 7	3F21	HOUSING, TAILINGS ELEVATOR	125 - 20
3D1	HINGE, CYLINDER DOOR	110 - 6	1D16	HOUSING, THERMOSTAT	25 - 36
1E13	HINGE, ENGINE PLATFORM	30 - 14	1I14	HOUSING, TRANSMISSION AND DIFFERENTIAL	50 - 11
4B3	HINGE, GRAIN TANK DOOR	150 - 2	3G5	HOUSING, UPPER TAILINGS AUGER	125 - 28
2G5	HINGE, GULLWING DOOR, R.H.....	80 - 22			
4C3	HINGE, HORIZONTAL UNLOADING AUGER	150 - 26			
2F21	HINGE, L.H. GULLWING DOOR.....	80 - 14			

ALPHABETICAL INDEX - CONTINUED

GRID		PAGE	GRID		PAGE
4B21	HUB SUPPORT, HORIZONTAL UNLOADING AUGER ..	150 - 20	1E15	INTAKE TUBES AND AIR CLEANER	30 - 16
2F3	HUB, CHAFF SPREADER	70 - 68	1D1	INTAKE VALVE	25 - 20
1B13	HUB, FAN	20 - 12	1D7	INTAKE, ENGINE OIL PUMP	25 - 26
1B5	HUB, ROTARY SCREEN DOOR	20 - 4	1C1	INTERCOOLER	20 - 26
2E21	HYDRAULIC FILTER, MAIN	70 - 60	3I6	INTERMEDIATE SHAFT MOUNTING, CYLINDER DRIVE, DUAL-RANGE	140 - 28
3C9	HYDRAULIC HOSE, VARIABLE DRIVE, FEEDER HOUSE	100 - 33	3I8	INTERMEDIATE SHEAVE, CYLINDER DRIVE DUAL RANGE	140 - 30
2E19	HYDRAULIC HOSES, CONTOUR MASTER L.H.	70 - 58	K		
2D24	HYDRAULIC HOSES, CYLINDER SPEED	70 - 38	2B9	KIT, BRAKE MASTER CYLINDER	60 - 8
2E7	HYDRAULIC HOSES, REEL PUMP	70 - 46	2I24	KIT, CAB HARDWARE	90 - 50
2D16	HYDRAULIC LINES AND HOSES, HEADER LIFT	70 - 30	2E22	KIT, CONTOUR MASTER CYLINDER REPAIR	70 - 61
1K5	HYDRAULIC LINES AND HOSES, L.H., 4-WHEEL DRIVE	50 - 56	1J21	KIT, CONTROL VALVE AND AXLE HOSES	50 - 48
2E15	HYDRAULIC LINES AND HOSES, REEL FORE-AND-AFT, FRONT	70 - 54	2D14	KIT, CONTROL VALVE, AUGER SWING	70 - 28
2C22	HYDRAULIC LINES AND HOSES, WET CLUTCH OIL COOLER	70 - 10	2D14	KIT, CONTROL VALVE, REEL FORE/AFT	70 - 28
1K11	HYDRAULIC LINES, CASE DRAIN, 4-WHEEL DRIVE	50 - 62	1F6	KIT, CONVENIENCE OUTLET	40 - 12
2E13	HYDRAULIC LINES, REEL FORE-AND-AFT, L.H.	70 - 52	1C17	KIT, CYLINDER LINER O-RING	25 - 11
1J17	HYDRAULIC MOTOR PISTON CARRIER	50 - 43	1E24	KIT, ELECTRICAL CONNECTOR SERVICE	40 - 4
2C14	HYDRAULIC PRESSURE LINES AND HOSES	70 - 2	1F1	KIT, ELECTRICAL CONNECTOR SERVICE	40 - 6
2E1	HYDRAULIC PUMP FEEDER HOUSE / REEL DRIVE ..	70 - 40	1E5	KIT, FUEL FILTER SERVICE	30 - 6
2C18	HYDRAULIC PUMP, MAIN	70 - 6	2D10	KIT, HEADER LIFT CONTROL VALVE REPAIR	70 - 24
2C16	HYDRAULIC RETURN LINES	70 - 4	1J10	KIT, HYDROSTATIC DRIVE MOTOR	50 - 34
2C13	HYDRAULIC/HYDROSTATIC OIL RESERVOIR	70 - 1	2C18	KIT, MAIN HYDRAULIC PUMP REPAIR	70 - 6
1J7	HYDROSTATIC DRIVE CHARGE PUMP	50 - 31	2E5	KIT, REEL DRIVE FLOW CONTROL REPAIR	70 - 44
1J1	HYDROSTATIC DRIVE CONTROL CABLES	50 - 24	2D12	KIT, REEL LIFT/VARIABLE AND CYLINDER SPEED	70 - 26
1J8	HYDROSTATIC DRIVE DISPLACEMENT VALVE	50 - 32	1H3	KIT, REEL SPEED BRACKET	40 - 64
1J10	HYDROSTATIC DRIVE MOTOR,	50 - 34	2C3	KIT, STEERING CYLINDER REPAIR	60 - 26
1K1	HYDROSTATIC DRIVE OIL HOSES, UPPER (4-WHEEL DRIVE)	50 - 52	2B15	KIT, STEERING PUMP SEALS	60 - 14
1J23	HYDROSTATIC DRIVE OIL LINES AND HOSES, LOWER (2-WHEEL DRIVE)	50 - 50	3D21	KIT, STRAW WALKER BEARING (FRONT)	110 - 26
1K7	HYDROSTATIC DRIVE OIL LINES AND HOSES, LOWER (4-WHEEL DRIVE)	50 - 58	1F3	KIT, TERMINAL AND WIRING	40 - 8
1J5	HYDROSTATIC DRIVE PUMP	50 - 28	1D21	KIT, TURBOCHARGER	25 - 42
1J3	HYDROSTATIC DRIVE PUMP SHAFT AND COVER	50 - 26	4B15	KIT, UNLOADING AUGER SWING CYLINDER	150 - 14
2H23	HYDROSTATIC HANDLE	90 - 24	1B5	KNIFE, ROTARY SCREEN DOOR	20 - 4
1J12	HYDROSTATIC MOTOR VALVE	50 - 37	3G13	KNIFEBANK AND HOUSING, CHOPPER	130 - 6
1K3	HYDROSTATIC OIL COOLER LINES AND HOSES	50 - 54	2J6	KNOB, AIR FILTER	95 - 6
2C13	HYDROSTATIC/HYDRAULIC RESERVOIR	70 - 1	2E24	KNOB, CHAFF SPREADER ADJUSTER	70 - 64
I			4B3	KNOB, DOOR, GRAIN TANK	150 - 2
1B3	IDLER ARMS, ROTARY SCREEN DRIVE	20 - 2	2I9	KNOB, GEARSHIFT	90 - 34
1B17	IDLER PULLEY	20 - 16	2I13	KNOB, OVERHEAD CONSOLE	90 - 38
3C3	IDLER SHAFT, FEEDER HOUSE	100 - 26	2I5	KNOB, STEERING COLUMN	90 - 30
3J10	IDLER, DRIVE, CLEAN GRAIN ELEVATOR	140 - 58	L		
3C4	IDLER, FEEDER CONVEYOR	100 - 27	3B13	L.H. DRIVE SHIELD WITHOUT AIRFLOW	100 - 12
2I5	IGNITION SWITCH	90 - 30	1F11	L.H. MAIN WIRING HARNESS	40 - 18
1D15	IMPELLER, WATER PUMP	25 - 35	1F13	L.H. MAIN WIRING HARNESS	40 - 20
1C16	IN VEHICLE OVERHAUL GASKET SET	25 - 10	4E1	LABELS, FRENCH CANADIAN	170 - 20
1H6	INDICATOR, CONCAVE	40 - 68	4E2	LABELS, PORTUGUESE	170 - 21
1H6	INDICATOR, SPIKE TOOTH BALL JOINT	40 - 68	4E3	LABELS, ROMANIAN	170 - 22
1D12	INLET OIL FILL	25 - 32	4E4	LABELS, RUSSIAN	170 - 23
1D14	INLET, WATER PUMP	25 - 34	4E5	LABELS, SPANISH	170 - 24
1J15	INNER COVER - CAM LOBE MOTOR	50 - 40	4E6	LABELS, UKRAINIAN	170 - 25
1I16	INPUT SHAFT, TRANSMISSION	50 - 14	2I19	LADDER EXTENSION ASSEMBLY	90 - 44
3D11	INSERTS, CONCAVE AND BEATER GRATE	110 - 16	2I17	LADDER, CAB PLATFORM	90 - 42
1D1	INSERTS, CYLINDER VALVE	25 - 20	2G16	LADDER, ENGINE COMPARTMENT	80 - 34
3D13	INSERTS, SPIKE TOOTH CONCAVE	110 - 18	4B3	LADDER, GRAIN TANK	150 - 2
1H21	INSPECTION LIGHT, CLEANING SHOE	40 - 84	2G10	LADDER, REAR LANDING	80 - 28
1D18	INTAKE AIR MANIFOLD	25 - 38	2G12	LADDER, REAR LANDING, LATCH ARM	80 - 30
3E3	INTAKE SHIELD, SHOE GRAIN SUPPLY AUGER	120 - 2	1H15	LAMP ASSEMBLY - L.H. FRONT	40 - 78
3E5	INTAKE SHIELDS, CLEANING FAN	120 - 4	1H16	LAMP ASSEMBLY, R.H. FRONT (AMBER)	40 - 79
			1H17	LAMP ASSEMBLY, REAR (AMBER)	40 - 80
			2G1	LAMP, REAR CORNER PANEL, FLOODLAMP	80 - 18

ALPHABETICAL INDEX - CONTINUED

GRID		PAGE	GRID		PAGE
2G20	LAMP, REAR, ENGINE ACCESS PLATFORM	80 - 38	3C14	LINKAGE, CONCAVE INDICATOR	100 - 38
2G16	LAMP, SERVICE, ENGINE COMPARTMENT	80 - 34	1H6	LINKAGE, CORN AND SMALL GRAIN CONCAVE	40 - 68
1H15	LAMP, TURN SIGNAL, L.H. FRONT (AMBER)	40 - 78	3I24	LINKAGE, FAN DRIVE SPEED CONTROL	140 - 46
2I20	LANDING, L.H.	90 - 46	2I9	LINKAGE, GEARSHIFT	90 - 34
2I22	LANDING, R.H.	90 - 48	3I22	LINKAGE, SPEED CONTROL, FAN DRIVE	140 - 44
2G10	LANDING, REAR	80 - 28	3F11	LOADING AUGER, CLEAN GRAIN	125 - 10
2G12	LATCH ARM, REAR LADDER LANDING	80 - 30	3I3	LOCKOUT ARM, DUAL RANGE	140 - 25
3B13	LATCH DRIVE SHIELD, L.H.	100 - 12	3E7	LOUVER, PRECLEANING CHAFFER	120 - 6
3C1	LATCH HANDLE, FEEDER HOUSE FLOOR	100 - 24	1H12	LOW SHAFT SPEED SENSORS AND BRACKETS	40 - 75
2H14	LATCH, CAB DOOR	90 - 14	3F5	LOWER AUGER, CLEAN GRAIN	125 - 4
3B17	LATCH, DRIVE SHIELD, R.H.	100 - 16	3F7	LOWER ELEVATOR, CLEAN GRAIN	125 - 6
4B9	LATCH, GRAIN TANK CLEAN OUT CHUTE	150 - 8	1J23	LOWER HYDROSTATIC DRIVE OIL LINES AND HOSES (2-WHEEL DRIVE)	50 - 50
4B3	LATCH, GRAIN TANK DOOR	150 - 2	1K7	LOWER HYDROSTATIC DRIVE OIL LINES AND HOSES (4-WHEEL DRIVE)	50 - 58
1B9	LATCH, RADIATOR SHELL	20 - 8	1C9	LUBRICANT, ELECTRICAL CONNECTOR, ENGINE	25 - 2
3E2	LATCH, SHOE GRAIN SUPPLY AUGER	120 - 1	1C9	LUBRICANT, VALVE STEM	25 - 2
3F21	LATCH, TAILINGS ELEVATOR	125 - 20			
2F13	LEFT SIDE SHIELD ASSEMBLY	80 - 6		M	
2F11	LEFT SIDE SHIELD, FRONT	80 - 4	1C10	MAIN BEARING CAP	25 - 4
2I9	LEVER, GEARSHIFT	90 - 34	1C18	MAIN BEARINGS	25 - 12
2D15	LIFT CYLINDER, HEADER, HYDRAULIC	70 - 29	3H12	MAIN GEARCASE	140 - 6
1H16	LIGHT ASSEMBLY - R.H. FRONT (AMBER)	40 - 79	2C18	MAIN HYDRAULIC PUMP	70 - 6
1H14	LIGHT, CAB ROOF	40 - 77	2D8	MAIN VALVE BLOCK SOLENOID ACTIVE HEADER HEIGHT CONTROL	70 - 21
1H21	LIGHT, CLEANING SHOE INSPECTION	40 - 84	1F10	MAIN WIRING HARNESS, L.H.	40 - 17
2H10	LIGHT, DOME, CAB	90 - 10	1F15	MAIN WIRING HARNESS, R.H. WITHOUT GREENSTAR	40 - 23
2G20	LIGHT, ENGINE ACCESS PLATFORM	80 - 38	1F18	MAIN WIRING HARNESS, R.H, WITH GREENSTAR	40 - 27
2G16	LIGHT, ENGINE COMPARTMENT	80 - 34	2J11	MANIFOLD, A/C COMPRESSOR, R134A	95 - 11
1H15	LIGHT, L.H. FRONT (AMBER)	40 - 78	1D18	MANIFOLD, AIR INTAKE	25 - 38
1H18	LIGHT, REAR TURN AND TAIL	40 - 81	1J15	MANIFOLD, CAM LOBE MOTOR	50 - 40
2F21	LIGHT, SERVICE, L.H. GULLWING	80 - 14	1D22	MANIFOLD, EXHAUST	25 - 43
2G5	LIGHT, SERVICE, R.H.	80 - 22	4C21	MASS FLOW SENSOR AND BRACKET YIELD MAPPING	155 - 6
2G7	LIGHT, SERVICE, RADIATOR	80 - 24	4C21	MASS FLOW SENSOR DOOR, YIELD MAPPING YIELD MAPPING	155 - 6
1H19	LIGHT, SIDE FINDER	40 - 82	4C21	MASS FLOW SENSOR, YIELD MAPPING	155 - 6
2H3	LIGHT, STUBBLE	90 - 2	2B9	MASTER BRAKE CYLINDER	60 - 8
1H20	LIGHT, TRANSPORT WARNING	40 - 83	2B7	MASTER CYLINDER, RESERVOIR, BRAKE LINES	60 - 6
1G11	LIGHT, UNLOADING AUGER	40 - 44	2B5	MASTER CYLINDERS, AND BRAKE PEDALS	60 - 4
1C17	LINER, CYLINDER	25 - 11	1E13	MAT, ENGINE PLATFORM	30 - 14
2F1	LINES AND FITTINGS, CHAFF SPREADER	70 - 66	3B19	MAT, FEEDER HOUSE FRAME	100 - 18
2D16	LINES AND HOSES, HYDRAULIC, HEADER LIFT	70 - 30	2H8	MAT, FLOOR	90 - 8
1K3	LINES AND HOSES, HYDROSTATIC OIL COOLER	50 - 54	1B9	MAT, RADIATOR SHELL	20 - 8
2E9	LINES AND HOSES, REEL DRIVE, L.H.	70 - 48	3F23	MATERIAL SENSOR, TAILINGS ELEVATOR	125 - 22
2E17	LINES AND HOSES, REEL LIFT	70 - 56	2I20	MIRROR, REAR VIEW, L.H.	90 - 46
2B19	LINES AND HOSES, STEERING, FRONT	60 - 18	2I22	MIRROR, REAR VIEW, R.H.	90 - 48
2C1	LINES AND HOSES, STEERING, REAR	60 - 24	4C19	MOBILE PROCESSOR, YIELD MAPPING	155 - 4
2C22	LINES AND HOSES, WET CLUTCH OIL COOLER	70 - 10	2I11	MODULE, ACTIVE HEADER HEIGHT CONTROL DISPLAY, R.H. CORNERPOST	90 - 36
1K5	LINES AND HOSES, 4-WHEEL DRIVE, L.H.	50 - 56	1G14	MODULE, CENTRAL ELECTRONICS AND CIRCUIT BOARDS	40 - 48
2B7	LINES, BRAKE, RESERVOIR, MASTER CYLINDER	60 - 6	4D3	MODULE, DATASTORE	155 - 12
2F3	LINES, CHAFF SPREADER	70 - 68	4D5	MODULE, DATASTORE	155 - 14
2F5	LINES, CHAFF SPREADER	70 - 70	2I11	MODULE, GRAIN LOSS DISPLAY, R.H. CORNERPOST	90 - 36
1K9	LINES, CONTROL VALVE TO CAM LOBE MOTOR	50 - 60	2D1	MODULE, SIX STACK SOLENOID CONTROL VALVE ..	70 - 14
1E5	LINES, FUEL FILTER	30 - 6	2I11	MODULE, TACHOMETER DISPLAY, R.H. CORNERPOST	90 - 36
1E2	LINES, FUEL INJECTION	30 - 2	3F23	MODULE, TAILINGS ELEVATOR SENSOR	125 - 22
2B21	LINES, HOSES, STEERING, L.H.	60 - 20	1H8	MOISTURE SENSOR	40 - 70
2C16	LINES, HYDRAULIC RESERVOIR RETURN	70 - 4	4C23	MOISTURE SENSOR AND BRACKET, YIELD MAPPING	155 - 8
2D24	LINES, HYDRAULIC, CYLINDER SPEED	70 - 38	4C23	MOISTURE SENSOR COVER, YIELD MAPPING	155 - 8
2E7	LINES, HYDRAULIC, REEL PUMP	70 - 46			
1J23	LINES, OIL, HYDROSTATIC DRIVE, LOWER (2-WHEEL DRIVE)	50 - 50			
1K7	LINES, OIL, HYDROSTATIC DRIVE, LOWER (4-WHEEL DRIVE)	50 - 58			
2C14	LINES, PRESSURE, HYDRAULIC	70 - 2			
2E11	LINES, REEL DRIVE, HYDRAULIC, FRONT	70 - 50			
2B23	LINES, STEERING, R.H. SIDE	60 - 22			
4B13	LINES, UNLOADING AUGER SWING CYLINDER	150 - 12			
3F7	LINK, CHAIN, GLEAN GRAIN ELEVATOR CONVEYOR	125 - 6			
3D11	LINK, SPIKE TOOTH TO RASP BAR (NARROW)	110 - 16			
1H6	LINKAGE, CONCAVE INDICATOR	40 - 68			

ALPHABETICAL INDEX - CONTINUED

GRID		PAGE	GRID		PAGE
4D1	MOISTURE SENSOR COVERS - YIELD MAPPING W/O MOISTURE SENSOR	155 - 10	2H23	OPERATOR'S ARMREST PANEL	90 - 24
4D1	MOISTURE SENSOR COVERS, YIELD MAPPING	155 - 10	2I1	OPERATOR'S ARMREST PANEL	90 - 26
4D6	MOISTURE SENSOR DECALS, YIELD MONITOR	155 - 15	2H20	OPERATOR'S SEAT AND BACKREST	90 - 20
4C23	MOISTURE SENSOR MOTOR, YIELD MAPPING	155 - 8	1F6	OUTLET, CONVENIENCE KIT	40 - 12
3G24	MOTOR AND DISC, CHAFF SPREADER	130 - 18	1C16	OVERHAUL GASKET SET	25 - 10
1G24	MOTOR 12 VOLT, STARTER	40 - 60	1C14	OVERHAUL KIT, ENGINE	25 - 8
1H10	MOTOR, ADJUSTING, SEPARATOR FAN DRIVE	40 - 72	2I13	OVERHEAD CONSOLE	90 - 38
1J13	MOTOR, CAM LOBE	50 - 38			
1H5	MOTOR, CONCAVE ADJUSTING	40 - 67		P	
2J2	MOTOR, HEATER AND AIR CONDITIONER	95 - 2			
1J10	MOTOR, HYDROSTATIC DRIVE	50 - 34	4C23	PADDLE, MOISTURE SENSOR, YIELD MAPPING	155 - 8
1J12	MOTOR, HYDROSTATIC VALVE	50 - 37	3G5	PADDLES, UPPER TAILINGS AUGER	125 - 28
4C23	MOTOR, MOISTURE SENSOR, YIELD MAPPING	155 - 8	3H3	PAN, CHAFF SPREADER	130 - 22
1J17	MOTOR, PISTON CARRIER	50 - 43	1D10	PAN, ENGINE OIL	25 - 30
2J4	MOTOR, RECIRCULATION BLOWER, HEATER AND AIR CONDITIONER	95 - 4	3E23	PAN, SHAKER	120 - 22
1H3	MOTOR, REEL SPEED, AND BRACKET	40 - 64	2F19	PANEL AND DOOR, LEFT FRONT	80 - 12
1G7	MOTOR, WINDSHIELD WIPER (LONG)	40 - 40	2I1	PANEL, ARMREST	90 - 26
2G18	MOUNTING BRACKETS, FUEL TANK	80 - 36	2H23	PANEL, ARMREST CONTROL	90 - 24
3H5	MOUNTING SUPPORT, CHAFF SPREADER	130 - 24	2G3	PANEL, RIGHT FRONT	80 - 20
2C13	MOUNTING, HYDRAULIC/HYDROSTATIC OIL RESERVOIR	70 - 1	2G14	PANEL, SIDE, REAR HOOD	80 - 32
2D20	MOUNTING, ONE GALLON ACCUMULATOR	70 - 34	2H6	PANELS, CAB FLOOR	90 - 6
3G18	MOUNTING, STRAW SPREADER AND GUARD	130 - 12	2H8	PANELS, CAB INTERIOR TRIM	90 - 8
4B15	MOUNTING, UNLOADING AUGER SWING CYLINDER	150 - 14	2B3	PARKING BRAKE PEDAL AND SEAL	60 - 2
2D3	MOUNTINGS, SOLENOID CONTROL VALVE FIVE STACK	70 - 16	2H16	PASSENGER SEAT CUSHIONS	90 - 16
2D5	MOUNTINGS, SOLENOID CONTROL VALVE MODULE (FOUR STACK)	70 - 18	2H22	PASSENGER'S SEAT SEATBELT	90 - 22
1K12	MUD SHIELDS, POWERED REAR WHEELS	50 - 63	2B3	PEDAL, PARKING BRAKE	60 - 2
1E17	MUFFLER AND EXHAUST PIPE	30 - 18	2I7	PEDAL, REVERSER FOOT CONTROL, FEEDER HOUSE	90 - 32
	N		2B5	PEDALS, BRAKE AND MASTER CYLINDER	60 - 4
1E4	NOZZLE, FUEL INJECTION	30 - 4	1C17	PISTON RINGS, ENGINE	25 - 11
	O		1J17	PISTON, CAM, AND CARRIER	50 - 43
1C9	OFF-SEASON STORAGE KIT	25 - 2	1J18	PIVOTS, CAPS AND YOKE (STEERABLE MOTOR)	50 - 44
2C20	OIL COOLER AND A/C CONDENSER	70 - 8	1C10	PLASTIC GASKET, CYLINDER BLOCK	25 - 4
1K3	OIL COOLER LINES AND HOSES, HYDROSTATIC	50 - 54	4C5	PLATE, CROSS AUGER BEARING, L.H.	150 - 28
1B24	OIL DRAIN, ENGINE CRANKCASE	20 - 24	3B21	PLATES, WEAR, FEEDER HOUSE CONTOUR MASTER	100 - 20
1D12	OIL FILL INLET AND COVER	25 - 32	1E13	PLATFORM, ENGINE	30 - 14
3H8	OIL FILTER ASSEMBLY, ENGINE GEARCASE	140 - 2	2G20	PLATFORM, ENGINE ACCESS	80 - 38
1D8	OIL FILTER, ENGINE	25 - 28	1D4	PLUG, ENGINE OIL FILL	25 - 23
1J23	OIL HOSES, HYDROSTATIC DRIVE, LOWER (2-WHEEL DRIVE)	50 - 50	4E2	PORTUGUESE DECALS AND LABELS	170 - 21
1K7	OIL HOSES, HYDROSTATIC DRIVE, LOWER (4-WHEEL DRIVE)	50 - 58	4C17	POSITION RECEIVER, BRACKET AND COVER YIELD MAPPING	155 - 2
1K1	OIL HOSES, UPPER, HYDROSTATIC DRIVE (4-WHEEL DRIVE)	50 - 52	2I13	POTENTIOMETER	90 - 38
1I23	OIL LINE, FINAL DRIVE	50 - 22	3E9	PRECLEANER CHAFFER FRAME	120 - 8
1J23	OIL LINES HYDROSTATIC DRIVE, LOWER (2-WHEEL DRIVE)	50 - 50	3E11	PRECLEANER CHAFFER FRAME ARMS	120 - 10
1K7	OIL LINES HYDROSTATIC DRIVE, LOWER (4-WHEEL DRIVE)	50 - 58	3E7	PRECLEANING CHAFFER	120 - 6
2B13	OIL LINES, BRAKE	60 - 12	2D22	PRESSURE GAUGE, ACCUMULATOR	70 - 36
1D19	OIL LINES, TURBOCHARGER	25 - 40	3H10	PRESSURE REGULATOR, ENGINE GEARCASE	140 - 4
1C22	OIL PRESSURE RELIEF VALVE	25 - 16	3H8	PRESSURE SWITCH, GEARCASE OIL FILTER	140 - 2
1B19	OIL PRESSURE SENSOR	20 - 18	2C14	PRESSURE, HYDRAULIC, LINES AND HOSES	70 - 2
1J7	OIL PUMP, HYDROSTATIC DRIVE CHARGE PUMP	50 - 31	3H23	PRIMARY COUNTERSHAFT, VARIABLE SHEAVE	140 - 18
2J11	OIL, A/C COMPRESSOR	95 - 11	4C19	PROCESSOR, MOBILE, YIELD MAPPING	155 - 4
1C8	OIL, ENGINE (TORQ-GARD, PLUS-50)	25 - 1	1C19	PULLEY, CRANKSHAFT	25 - 13
1C9	OIL, VALVE STEM LUBRICANT	25 - 2	1B13	PULLEY, ENGINE FAN	20 - 12
			1B17	PULLEY, FAN AND DRIVE IDLER	20 - 16
			3I12	PULLEY, SECONDARY COUNTERSHAFT DRIVE	140 - 34
			1D14	PULLEY, WATER PUMP	25 - 34
			3H16	PUMP DRIVE AND SEPARATOR, GEARCASE	140 - 10
			2E3	PUMP MOUNTING SHEAVE, REEL / BELT PICKUP DRIVE	70 - 42
			2E1	PUMP, CHAFF SPREADER	70 - 40
			2F3	PUMP, CHAFF SPREADER, HOSES, VALVES	70 - 68
			1D7	PUMP, ENGINE OIL	25 - 26
			1E11	PUMP, FUEL	30 - 12
			1E2	PUMP, FUEL INJECTION	30 - 2
			1E7	PUMP, FUEL TRANSFER	30 - 8